



APRIL 2025

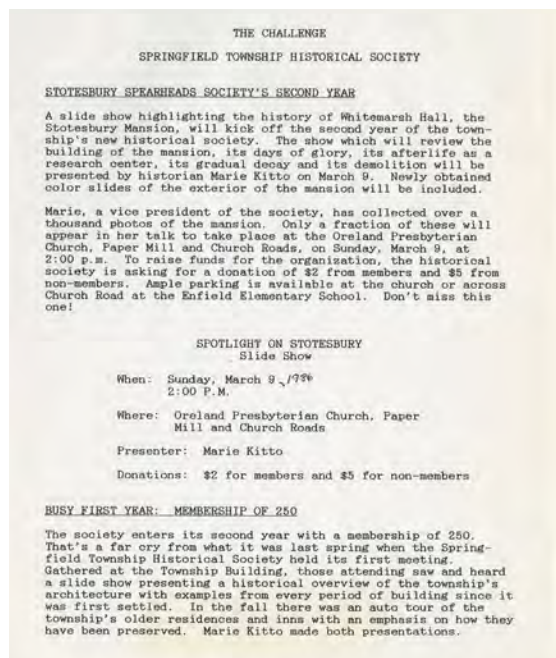
# The Challenge

Newsletter for Friends and Supporters of the Springfield Township Historical Society

P.O. BOX 564, FLOURTOWN, PA 19031 | 215-233-4600 | [SPRINGFIELDHISTORY.ORG](http://SPRINGFIELDHISTORY.ORG)



Whitmarsh Hall during demolition. Photograph originally taken for the *Springfield Sun* by photographer Bob Raines, May 1980.



First issue of *The Challenge*, Springfield Township Historical Society's newsletter sent to members.



Shirley Hanson and Marie Kitto, Founders and Board Members of the Springfield Township Historical Society, with Carson Valley School Executive Director John Taaffe in front of the entrance to Mother Goose Cottage.

## Springfield Township Historical Society Celebrates 40 years!

By Stephanie Walsh, Archivist

Since time was first recorded, our events and stories have been handed down through generations. From cave paintings to stories around a dinner table, handwritten notes in family Bibles and formal journals and ledgers, to our current routine of mobile phone photographs and social media posts, people have found a way to preserve and share their history. Prior to the Society's founding, residents with an affinity and passion for history gathered documents and photographs, researched land deeds and property records, and scoured newspapers for first-hand accounts of events.

The demolition of *Whitmarsh Hall*, Edward T. Stotesbury's Wyndmoor estate, proved to be the catalyst needed for an official historical repository in Springfield Township. On June 24, 1985, the Springfield Township Historical Society was incorporated. Within the first year of operation, the Society had over 200 members and began the ongoing endeavor to promote the area's heritage and make accessible this information through programs and tours of historic sites in the Township.

While the incorporation of the Society created an official historic resource, it was left without an actual home. Collection material was stored in the homes of various board members or within donated spaces throughout Wyndmoor and Chestnut Hill, as well as Orchard Cottage at Carson Valley Children's Aid. The Society briefly held space at the Chestnut Hill Historical Society (now the Chestnut Hill Conservancy), which allowed for public access to the collection. In 2006, after an initial fight to save the Black Horse Inn from demolition and an extensive restoration by the Township and the Friends of Historic Bethlehem Pike, the Society moved into two rooms on the building's first floor where it continues to promote the diverse history of the Township. In addition to open hours where visitors can access the collection and obtain research assistance, the Society is an advocate for preservation within the area.

### Marking 40 Years of Preserving Our Past

Thank you to all of our friends, volunteers, and supporters who have helped make this journey possible. Your commitment ensures that future generations will continue to learn from and connect with our past.

This issue of *The Challenge* is our last paper issue. If you would like to receive our digital newsletter, please send us your email address to [archives@springfieldhistory.org](mailto:archives@springfieldhistory.org).



#### OFFICERS

Albert M. Comly, Jr  
*President*

Nancy McDonald  
*Vice President*

Roshni Wood  
*Treasurer*

MaryKatherine  
McGettingan  
*Secretary*

#### Directors

Kerry Boccella  
Ryan Cortez  
Cindy Hamilton  
Melissa Hinds  
Chuck Rittenhouse  
Karynn Squadrito  
Baird Standish  
Erika Scharr  
Katie Worrall

#### Board Member Emeritus

Dorothy J. Cutler

#### Staff

Stephanie Walsh  
*Archivist*

#### Volunteers

Barb Coleman  
Dan Myers  
Ray Smith  
Jim Villante  
Ann Mushrush



#### Follow Us!



Stay up-to-date for  
events and lectures!



## STHS Archives Are Open to the Public!

The Black Horse Inn  
1432 Bethlehem Pike, Flourtown

Wednesdays 1:00-5:00 p.m.  
Saturdays 9:00 a.m.-Noon

For more information, call 215-233-4600 or email  
[archives@springfieldhistory.org](mailto:archives@springfieldhistory.org)

## Get Involved

Our dedicated volunteers play a crucial role in supporting the historical society and are essential to advancing our mission. If you have a passion for history, enjoy working with computers, and can spare an hour or two each week, we'd love to hear from you! Please contact the Archivist at [archives@springfieldhistory.org](mailto:archives@springfieldhistory.org) or call 215-233-4600 to learn about how you can help.

# Transporting through Springfield Township

by Dan Myers, STHS volunteer



In 1698, the surveyor general of Pennsylvania called for the creation of a road to transport lime from Whitemarsh to Philadelphia. The pike opened in 1703 with completion to Bethlehem by 1743. Bethlehem Pike, then known as "King's Highway," was used for transporting lime from nearby quarries and allowed farmers access to Wissahickon Creek grain-grinding mills, giving Flourtown its 1743 founding and name.

By 1763, stagecoach lines began traversing the pike. Flourtown, located approximately ten miles from Philadelphia, became a necessary resting stop or change-out for stagecoach horses. As a result, eight inns would open on the mile-and-a-half stretch through Springfield Township.

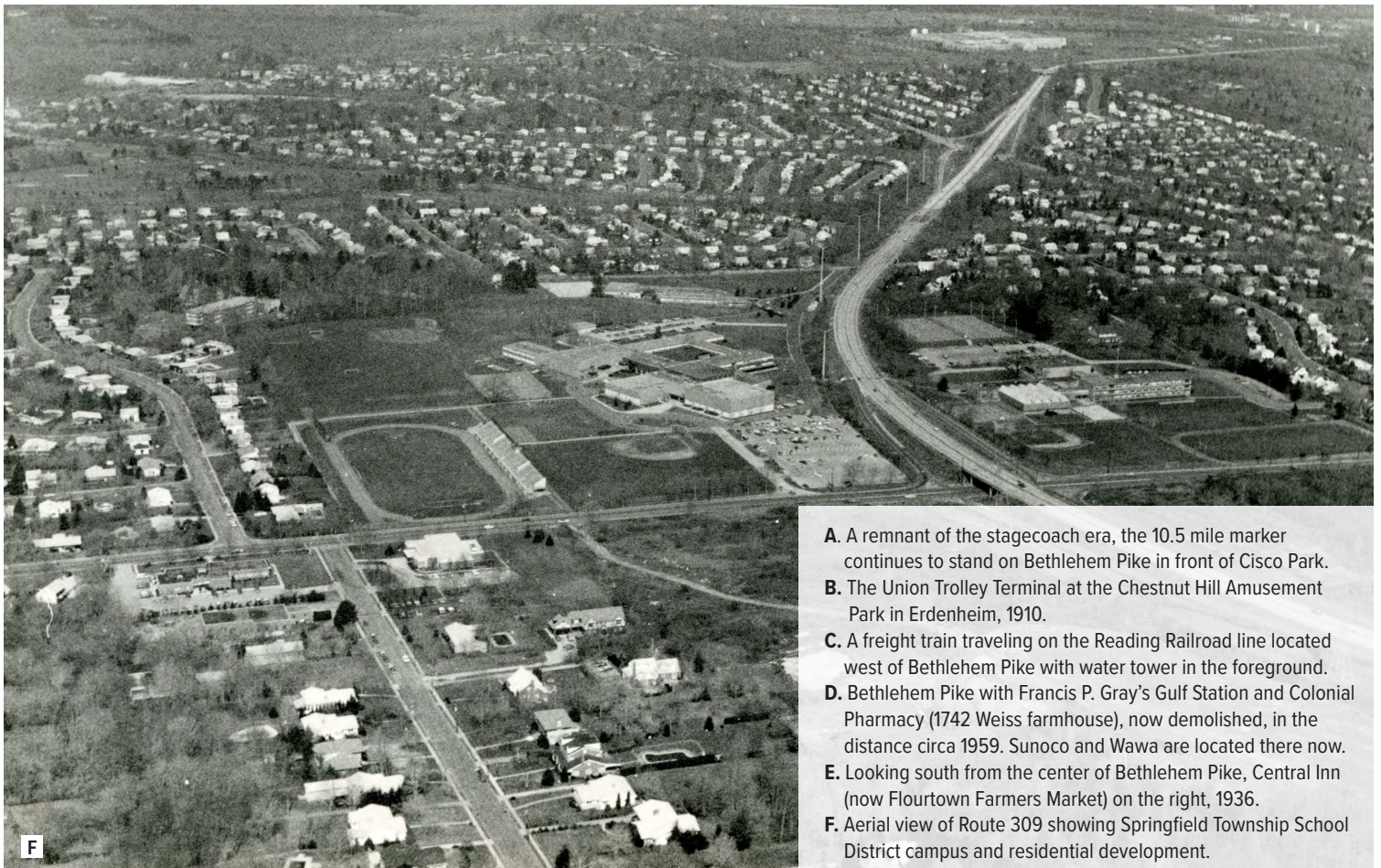
In 1902 the Philadelphia and Lehigh Valley Traction/Transit Company began running a trolley from Allentown to Erdenheim. The trolley would eventually run from Bethlehem through Springfield Township until it was replaced with buses in 1926 and today's SEPTA Route #94.

In 1686, Thomas Fitzwater discovered vast limestone deposits on his land (present day Oreland), erecting a kiln for processing in 1693. After 1836, a branch line of the Plymouth Railroad, used for transporting the area's high-grade limestone to market, was laid across Bethlehem Pike and over Church Road on its way to Oreland via horse drawn freight cars.

After 1857, the new Philadelphia to Bethlehem North Penn Railroad included a passenger station at Oreland. In 1866, the Plymouth Railroad connected a line to the North Penn Railroad at Oreland with passenger stations at Bethlehem Pike and Church Road. With the closing of the Oreland Quarry in 1958 and Flourtown commercial users and train stops causing traffic jams on Bethlehem Pike, the railroad was officially abandoned in 1984.

Laid on the abandoned Pennsylvania Railroad bed, construction began in May 1954 on the Fort Washington Expressway (PA #309). This Fort Washington Connector was completed in late 1959, alleviating traffic on Bethlehem Pike through Springfield Township.





- A. A remnant of the stagecoach era, the 10.5 mile marker continues to stand on Bethlehem Pike in front of Cisco Park.
- B. The Union Trolley Terminal at the Chestnut Hill Amusement Park in Erdenheim, 1910.
- C. A freight train traveling on the Reading Railroad line located west of Bethlehem Pike with water tower in the foreground.
- D. Bethlehem Pike with Francis P. Gray's Gulf Station and Colonial Pharmacy (1742 Weiss farmhouse), now demolished, in the distance circa 1959. Sunoco and Wawa are located there now.
- E. Looking south from the center of Bethlehem Pike, Central Inn (now Flourtown Farmers Market) on the right, 1936.
- F. Aerial view of Route 309 showing Springfield Township School District campus and residential development.



# The Suburbanization of Springfield:

## A POST-WAR TRANSFORMATION

by Cindy Hamilton, STHS board member

The Springfield Township Historical Society is dedicated to preserving the local history that has shaped our community. As part of our mission, we conduct research and collect materials that document this history. In celebration of our 40th anniversary, we are focusing on the post-World War II era, particularly the residential developments that played a key role in shaping Springfield's modern landscape. This builds on our earlier Historic Resource Survey of Flourtown and Erdenheim, where we cataloged all buildings over 50 years old.

Springfield's roots trace back to the time of William Penn, but much of its present-day character was shaped in the years following World War II, during a time of major suburban expansion in America. The township's population grew dramatically from 5,603 in 1940 to 11,403 by 1950, and to 20,652 by 1960. This rapid growth was driven by a combination of factors: the post-war economic boom, a housing shortage faced by returning veterans, and advances in construction materials that enabled affordable home mass production. Federal programs, such as guaranteed mortgages for veterans and FHA-insured loans for non-veterans, made homeownership possible for many for the first time. Additionally, the widespread use of automobiles allowed suburban developments to expand beyond traditional train-accessible areas.

These developments were designed with convenience and family living in mind, typically featuring proximity to shopping centers, parks, and schools. The homes within these neighborhoods followed standardized floor plans and were marketed as more than just houses—they offered a lifestyle centered on the American dream of home ownership, complete with a yard for children and pets. The developments featured winding streets, curbs, sidewalks, street lighting, and consistent setbacks and lot sizes. Most homes were low-density, single-family units with private, landscaped yards and attached garages.

Architectural styles varied between traditional designs, such as Colonial and Cape Cod, and modern split-level homes with low-slung roof lines. Many homes incorporated prefabricated components, helping builders offer affordable prices through economies of scale.

Today, Springfield's post-war neighborhoods remain largely intact. While updates such as garage conversions or new siding have occurred, the neighborhoods still retain much of their original charm and character. The Springfield Township Historical Society is working to expand our collection of materials related to these neighborhoods. We encourage anyone with information, such as deeds, development brochures, or early photographs, to reach out to our Archivist, Stephanie Walsh. Your contributions will help preserve and share the story of Springfield's growth during this significant period.

*Chesney Downs, originally "Chesney Downs in Whitemarsh Valley," Erdenheim*



Chesney Downs Home, *The Philadelphia Inquirer*, October 13, 1940



Chesney Downs Home, *The Philadelphia Inquirer*, November 22, 1942

### Date

Initially announced in 1940, the development was delayed by World War II, but construction resumed in the post-war years and was largely completed by 1950.

### Developer/Builder

Joseph A. Hayden, developer (president of the Home Builders Association of Philadelphia and Suburbs); Chesney Downs, Inc., builder.

### Stats/Style

Colonial style houses on 54 acres.

### Original Sale Price

Pre-war listed at \$7,990; by 1942 prices dropped to \$5,990 due to the global economic struggles; post war the prices increased to \$15,990 in 1950. FHA financing available.

### Advertised As

"Finest & best located development in suburban Phila."

"The character of its distinctive single residences is such as to assure permanency and enduring value."

"Mothers are free from fear when their children play outdoors."

### Original Features

"Foyer entrance, powder room, living room, dining room, kitchen, fireplace, terrace from dining room – French door. Four bedrooms, 2 tile baths, stall shower, linen closet, large closet space. Heil oil burner, insulated gas range, built-in garage."



Enfield Homes, Development Brochure, c. 1946

## Enfield Homes, currently referred to as "The Pretzel," Oreland

**Built**  
c. 1946

**Stats/Style**  
Colonial

**Original Sale Price**  
\$5,990 FHA Approved

### Original Features

- Deep front lawns beautifully landscaped
- Various Colonial designs
- Steel window frames and sash
- All large rooms
- Kitchen fully equipped with metal cabinets, inlaid linoleum, insulated ranges and double drain board cabinet sinks.
- Hardwood floors throughout
- Large closet space
- Wood burning fireplace
- 1 and 2-color tile baths
- 1 and 2-car garages, overhead garage doors
- Abundance of electrical outlets

## Whitemarsh Village, Wyndmoor

### Built

Following Edward T. Stotesbury's death, his wife Eva sold the mansion and 250-acre grounds for development into over 1,000 homes and named the development Whitemarsh Village. Construction on the initial 1-story ranch style homes had begun in 1946 and the second section, containing the 2-story homes followed shortly thereafter in 1948.

### Developer/Builder

Matthew H. McCloskey, Jr., president of McCloskey Homes, Inc., builder; Albert M. Greenfield & Co., selling agent; Silverman & Levy, architects of 2-story homes.

### Original Sale Price

\$8,800 and \$9,800 (original 1-story homes); \$16,950 - \$18,750 (2-story homes), FHA and VA approved.

### Advertised As

"In the famed Stotesbury Estate, a setting unsurpassed for beauty and convenience, McCloskey & Co. of Fla. offers a home that is far ahead in its conception of design and planning."

"Created for those who seek homes of individuality in an environment of permanent beauty."

"Much of the priceless distinction of the great estate has been preserved – glorious vistas greet the eye everywhere."

"Here is room for your children to play – and with safety."

### Original Features

- 1-story Ranch Style – "The Cromwell"
- 7 large rooms on one floor
  - Colorful modern design



Whitemarsh Village, *Woman's Home Companion*, November 1947

2-story Widener Road Section – "The Wyndmoor"  
Picturesque setting of towering trees, rolling hills and flowering park areas

- 3 full size bedrooms
- 2 baths
- Powder room
- Picture windows
- Open fireplace
- Ample closet space

### Unique Facts

Whitemarsh Village was featured in the 1947 *Woman's Home Companion* as "House in a Hurry" due to its concrete construction method, which reduced hardening time from days to hours. Families could move in within two weeks. The article highlighted minimal woodwork, with only doors and baseboards to clean, and casement windows that minimized dust collection. It also noted that 10 to 15 one-story homes could be built per day.

## Sunnybrook – North Hills aka "White City"



Sunnybrook – North Hills, original development brochure, c. 1948

**Built**  
1948

### Developer/Builder

Sunnybrook, Inc., John P. Henrie, realtor and developer; Conrad J. Gettler, builder.

**Stats/Style**  
Colonial

### Original Sale Price

\$9,050 base price; veterans no cash, and civilians \$1,550 down

### Advertised As

"Ideal location...2 squares to Reading R.R. Oreland Station...1 square to Super Market."

### Original Features

- Large lot sodded in front; graded and seeded in rear
- Large aluminum windows
- 6 rooms
- Large living room
- 3 bedrooms
- Model kitchen with plenty of built-in cabinets
- 36" gas range
- Monotile bath with shower
- Generous closet space
- Hardwood floors throughout
- Plastered walls
- Insulated
- Numerous electric outlets

## Sunnybrook (near Sandy Run Country Club), Oreland



Sunnybrook Ranch Trailblazer Model, *The Philadelphia Inquirer*, December 2, 1951

### Built

c. 1949 in various stages

### Developer/Builder

George Daub, AIA, architect (ranch Trailblazer model);  
Conrad J. Gettler, builder, John P. Henrie, realtor

### Stats/Style

Ranch, Colonial, and Cape Cod

### Original Sale Price

\$12,500 for ranch model; \$16,000 for Colonial  
model; FHA financing available

### Advertised As

"Indoor-outdoor living reaches a new perfection  
in one of close-in Montgomery County's loveliest  
communities."

"This isn't just an architect's dream of the perfect  
ranch house....it's a reality...and it's good."

### Original Features:

- Philippine mahogany and stone exterior
- Sliding aluminum windows
- Unusual pergola with corrugated colored  
fiber glass [sic]
- Private outdoor dining terrace with trellis  
overhead
- Paneled wall in living room
- "Modern-fold" door between den and  
living room
- Snack bar with Formica top
- 3 wonderful bedrooms
- Colored tile bath
- Tile powder room with built-in dressing  
table with Formica top
- "A dream kitchen every woman will enjoy."



Holiday Houses, Development Brochure, c. 1955

## Holiday at Paper Mill Glen, "Holiday Houses" Erdenheim

### Built

1955

### Developer/Builder

Theodore Brandow, architect; Madway Engineers  
& Constructors

### Stats/Style

Split level

### Original Sale Price

\$20,550

### Advertised As

"Created for the happiness and completeness of  
family living."

"From the floor to the soaring cathedral ceiling,  
'Holiday' is the one home for families weary of  
the ordinary."

### Original Features

"Entrance foyer, living room-dining room and kitchen  
on the entrance level; a large family room, as well  
as an oversized garage on the lower level, and  
three bedrooms and two baths on the upper level."

"A double window wall brings the terrace and  
garden into the living-dining room, with its  
cathedral ceiling."

"The kitchen is located in front, in keeping with the  
latest trend of most custom-built homes. Kitchen  
equipment includes maple cabinets in rich walnut  
and white, built-in wall oven and surface burners."

### Unique Fact

The developers hired Beatrice West, President  
of Beatrice West Color, Inc., for exterior color  
selection. A respected New York stylist, she was the  
nation's top home color consultant, having worked  
on over 65,000 homes.



Flourtown Gardens, Development Brochure, c. 1957

## Flourtown Gardens, Flourtown

### Built

1957

### Developer/Builder

Flourtown Gardens, Inc.

### Stats/Style

Formerly a portion of Sunnybrook Golf Course.  
144 acres, 200-homes; split level and Cape Cod;  
Models included The Cavalier and The Crefelt

### Original Sale Price

\$15,600 and financing available

### Advertised As

"Situated less than two miles above Chestnut Hill,  
is Philadelphia's newest and finest residential  
community....this is the last large tract of this  
caliber available in such a highly sought after,  
close-in location"

"A miracle home at a miracle price."

"Magnificently new split level homes in the heart of  
an estate lined suburb."

### Original Features

"Beautiful, spacious kitchen with Youngstown steel  
cabinets and sink in exciting "go-together" colors.  
Huge living room with panoramic picture window

### Unique Fact

Flourtown Gardens was built adjacent to the famous  
Penn Oak Tree in Springfield, which dated back to  
the time of William Penn. Cleverly, the developer  
utilized trees for all street names (Penn Oak Rd.,  
Buttonwood Rd., Poplar Rd., Spruce Rd., Mulberry  
Rd., Cherry Ln., Dogwood Rd.)

*Do you have information on  
your neighborhood?  
Share it with us—from old maps  
and photos to sales brochures,  
we want to see it!*



# Giving History a Home

## *Donating Artifacts Preserves the Past*



**The STHS collections** preserve the history of our community—where we work, live, and play—and how we move through time. We maintain a repository of photographs, research on homes and institutions, maps from the 19th to 21st centuries, and deeds and documents related to Springfield Township properties and landmarks. With your help, we can continue preserving this history for future generations.

As you declutter, consider donating to the Society. Often, forgotten mementos help fill gaps in our history. We collect items related to various aspects of the Township's history. Below is a list of items we need for our collection.

- Media (photographs, slides, negatives, videos)
- Correspondence (postcards, letters)
- Ephemera (booklets, brochures, pamphlets, flyers, receipts, ticket stubs)
- Maps and atlas plates
- Architectural drawings, blueprints, plot plans
- Deeds, mortgages and other items documenting real estate transactions
- Telephone books and directories
- Newspapers, periodicals, microfilm
- Business and organization records (meeting minutes, ledger books, financial reports, etc.)
- Genealogical information
- Diaries, journals, scrapbooks, yearbooks

**Wondering if it's relevant? Did it happen in Springfield Township and is it associated with any of the following:**

- Families
- Businesses, shopping centers, hospitals
- Schools, colleges, religious institutions
- Performing arts
- Civic and non-profit organizations, clubs
- Historic sites
- Fire companies
- Military and veteran organizations
- Politics and government

**Still not sure if we would want it? ASK the Archivist!**

215-233-4600 or [archives@springfieldhistory.org](mailto:archives@springfieldhistory.org)



## *Great Estates of the Gilded Age Exhibit Opens Sunday, April 27, 2025*

Please visit this captivating and educational exhibit that highlights the opulent mansions built in Springfield Township between the 1870s and 1920s during a time of immense wealth and prosperity. Prominent industrial magnates from Philadelphia began acquiring land in Springfield to construct both summer and year-round residences. The exhibit showcases photographs from our collections.

Our Archivist, Stephanie Walsh has curated the exhibit and Historical Society Vice President Nancy McDonald, designed the informative panels.

The exhibit will be on display at the Free Library of Springfield Township for the foreseeable future. Come explore this fascinating chapter of Springfield's history.

# STHS Acquisitions January 2024 – March 2025

## MANUSCRIPT COLLECTIONS

Enfield Pottery and Tile Works research, ephemera, and photographs compiled by Jane Castle Borie and Dot Cutler, 1980s.  
Donated by Dot Cutler and Karynn Squadrito.

< Flourtown Carnival Records including grounds lease, instructions, flow charts, and program, 1952. Donated by Albert M. Comly, Jr.

*Franklin's Street and Business Occupancy Atlas, Philadelphia and Suburbs* published by the Franklin Survey Company, 1946.  
Donated by Lew and Ramona Salotti.

A.H. Mueller Property Atlas Cheltenham, Abington, Springfield 1909, Franklin's Property Atlas of Montgomery County Volume D. 1949; and Atlas of the City of Philadelphia 1910 (4 items).  
Donated by Rick Lam.

Material on *Lanes End*, later known as *Guildford* and the Wharton Sinkler Conference Center; includes real estate brochure, obituaries, clippings, and photograph of Wharton Sinkler in front of estate. From the Morris Arboretum Archives.

Springfield Township County Board of Assessment Appeals, 1978 (3v).  
Donated by The Historical Society of Fort Washington.

Springfield Township area and high school ephemera, along with Victrola from the Clarence Brown Estate.  
Donated by Donna Dvorak.

Springfield Township High School ephemera.  
Donated by Babs Senker Krug.

Springfield Township area and Historical Society ephemera. Donated by Ed Zwicker IV.

Springfield Township Historical Society Records, President files (2008 – 2013).  
Donated by Edward Zwicker IV.

Springfield Township Historical Society Records, Treasurer files (2015-2022).  
Donated by Albert M. Comly, Jr.

Women's Club of Flourtown Records.  
Donated by Ed Zwicker IV.

## PHOTOGRAPH AND MEDIA COLLECTIONS

Photographs and ephemera pertaining to the family and estate of Henry Frazier Harris.  
Donated by Rebecca Pepper Sinkler.

## NEWSPAPER AND CLIPPINGS COLLECTIONS

*Suburban Life Magazine* Volume 16 Issue 1, includes article on La Salle College High School *Expanding the Horizon* by Matt Cosentino, pages 14-15.

## LIBRARY

Eastern Montgomery County area telephone books including Yellow Book 2003-2006, 2018-2019; Verizon 2002/03, 2005.  
Donated by C. Chris Weth.

*The History of An Old Philadelphia Land Title* by John Frederick Lewis, 1934.  
Donated by Roger Spence.

*A Historical Sketch of Roxborough, Manayunk, Wissahickon*, 1940.  
Donated by the Chestnut Hill Conservancy.

*Montgomery County: The Second Hundred Years* Volumes 1 and 2, published by Montgomery County Federation of Historical Societies, 1983.

*The Montiers: From Enslavement to Paul Robeson and Beyond* by Donald Scott, Sr., 2005.  
Donated by Donald Scott, Sr.

*The Mount Mount Saint Joseph Academy Magazine*, Commencement Edition, Fall/Winter 2023.  
Donated by Leslie Bell.

*The Mount Mount Saint Joseph Academy Magazine*, Commencement Edition, Fall/Winter 2024.  
Donated by Leslie Bell.

*Philadelphia Then and Now: 60 Sites Photographed in the Past and Present* by Kenneth Finkel (text), Susan Oyama (Photography) and the Library Company of Philadelphia, 1998

*Retina: Century of Springfield*, Springfield Township High School Yearbook, 2024.

> *Retina*  
Springfield Township High School Yearbooks, 1945, 1947-1948 (3 items).  
Donated by the Springfield Township Alumni Association.

*Ropsley: The Wood Years 1992-2021*.  
Donated by Ted Wood, Jr.

*When the Siren Sounds...A Century of Service: The History of the Flourtown Fire Company* by Charlie Samtmann, 2010 \*signed by author.  
Donated by Kathy McGettigan.

## EPHEMERA/OBJECT COLLECTIONS

Civil Defense "Fire Watchers" mark, WWII era.  
Donated by William and Deborah David.

Enfield School child's t-shirt and newspapers of historic interest from 1829, 1858, 1865, 1912, 1945, as well as Civil War map with handwritten notes.  
Donated by Roger Spence.

> Flourtown Sportsmen's Association, Inc. patches.  
Donated by Ross Gordon Gerhart III.

Mount Saint Joseph Academy Commencement invitations, June 4, 1971 and June 6, 1975.  
Donated by Leslie Bell.

Oreland Lions Little League banquet programs 1957 – 1959 (photocopies).

Penn Oak Tree remnant 14"x15" sold by Springfield Township in 1976, along with history of William Penn Oak Tree.  
Donated by Barbara Rodder.

Springfield Township memorabilia. Donated by Susan Beil Duckwitz.

Springfield Township High School memorabilia including photographs, meeting minutes, handbooks, and other ephemera; as well as material from the Chestnut Hill Amusement Park.  
Donated by Alan Eickhoff.

Springfield Township High School ephemera 1971-72 and other Springfield area items.  
Donated by Ed O'Donnell.

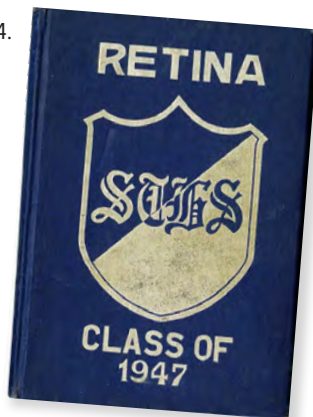
Springfield Township School District JV letter and Hillcrest Junior High School banner.  
Donated by Kathy McGettigan.

"Welcome Home Celebration to the US Service Men" program on October 18, 1919 at the Wyndmoor Public School Grounds.  
Donated by Matt Owens.

## RESEARCH COLLECTION – RESTRICTED TO RESEARCH ONLY

Kerper Family photographs and educational material, includes information from George Kerper who was a member of the first high school graduation class.  
Shared by Betty Kerper McAllister.

Watson family photographs and 1933 STHS record book, includes information on Winoga Stock Farm, Jeremiah Snyder and George Watson who worked on the farm.  
Shared by Betty Kerper McAllister.





# Thank you!

The Springfield Township Historical Society, thanks you for your generous contribution to our efforts. Your support plays a crucial role in preserving and sharing the rich history of our community, and we are incredibly fortunate to count you among our valued friends. The following list represents those who have given to our Annual Fund during FY23 and FY24 and does not reflect donations given at events or fundraisers.

## **\$1,000+**

Anonymous  
E. Clive Anderson  
Michael & Ryan Cortez-Forte  
Premier Building Restoration

## **\$500 TO \$999**

Kerry Boccella  
Chestnut Hill Dental  
Dan Helwig Realtors  
Higgins & Welch Appraisers  
Jamison Home Services  
KMA Design Studios  
Leapfrog Group  
Lynn Gottschalk & Company  
McHugh Engineering  
Andrew McNally Chimney, LLC  
The Sivel Group, LLC  
That HVAC Guy

## **\$250 TO \$499**

Albert & Kathleen Comly  
Beatrice R. Cromwell  
Michael DeLaurentis For Concrete  
Glendinning Contractors  
Cindy and David Hamilton  
Janney Montgomery Scott  
Jennifer & Michael Kolodner  
John F. Murray Funeral Home  
Geoffery Pratt  
Rittenhouse Lumber  
Schiff & Moniz Dental Group  
Anne Coxe Toogood  
Valley Green Capital Partners  
Catherine Worrall  
Zwicker Consulting Services

## **\$100 TO \$249**

Anonymous  
John & Maryellen Aviti  
Ronald & Tamara Banko  
Lorraine Basara  
Stephen Bell  
Braden Bonner  
Judith Brandt  
Landis Doner  
Sean Gallagher & Lisa Marshall  
Elizabeth Gavula & Patricia Ann Somers  
Robert Gutowski  
Katherine Haight  
Joseph & Sallie Halligan  
William Knox  
Peter & Emilie Lapham  
Timothy and Arlene Lawn

Margaret Murphy  
Mark Rosa  
Thomas & Marylou Ryan  
Kevin & Erika Scharf  
Carol M. Schramek  
Frank & Kathleen Seidman  
Raymond Smith  
Roger & Marilyn Spence  
Sarah Werntz  
Steve Zelitch

## **\$75 TO \$99**

George Connelly  
Carl and Catherine Graf

## **\$50 TO \$74**

Patricia Butler  
Barbara Kerper Coleman  
Doris Coleman  
Margaret & Michael Davenport  
Thomas Fitzpatrick  
Norman Bruce Hagy  
Horchler/Zlotolow Giving Fund  
Mary Louise Hughes  
David & Carol Morris  
Leo & Mary Mullen  
Joanne Olszewski  
Michell & Maureen Sava  
Don Scott  
Marc Silbert  
Christine Smith  
Peter and Mary Thallner  
John Walsh  
Robert & Maria Wilmot  
Peter & Susan Wilson  
Beth Zimmerman

## **\$25 TO \$49**

Carol M. Allen  
James Belcher  
Homer & Patricia Brown  
Janice & Daniel Butler  
Virginia Clarke & Virginia Vacca  
Thomas Conboy  
Kate Crumrine  
Joe Cutler  
Suzanne & William Damert  
Michael Darcy  
Roddy Davis  
James & Elizabeth Destefano  
Joanne Dhody  
Ryan Dougherty  
Robert & Margaret Gleason  
Fred & Glenda Sue Gordon

Ruth Haslam  
William J. Hopkins  
Vincent & Jane Jacoby  
Kathleen James  
David & Heather Kauffmann  
Neil Kugelman  
Stephen & Nancy Lester  
Michael & Mary Lynn McCann  
Daniel & Elizabeth McCrudden  
Maureen McGettigan  
James P. Mcnerney  
Carol Nyzio  
David & Margery Peet  
Jeremy & Heather Pennington  
Hank & Beth Resch  
Santos & Ellen Rivera  
James & Marianne Roche  
Thomas & Katherine Shiels  
Eileen & John Stack  
Francis & Suzanne Stewart  
Anne Marie Staffieri  
Charleen Stevens  
Hugh Roy Thompson  
Paul & Judith Thompson  
Ronald & Patricia Valentine  
Michael & Sandra Vecchione  
David & Donna Wade  
Fred & Myra Weissberger  
Carl & Theresa Weissinger  
Wayne Willcox

## **\$15**

Jane Allison  
James Calhoun  
Richard Curtis  
Anthony & Tina Marie Dipietrantonio  
Lois Stacy Edmunds  
Mary & Joseph Hogan  
Paul & Joan Housworth  
Pamela Ingram  
Robert Kunz  
Kyle Lorenz  
Todd & Laurie Malora  
William & Joan Montelius  
Robert & Dorothy Wolf

## **BEQUESTS TO THE SOCIETY**

A special thanks and profound gratitude to Suzanne Dufrasne's estate for the generous bequest.

*We've done our best to ensure this list is accurate. If you spot an error, please let us know and accept our sincere apologies for any oversight.*



## Become a Friend of Springfield Township Historical Society

We invite you to become a Friend of the Springfield Township Historical Society, a 501(c)(3) non-profit organization that seeks to collect, preserve, and promote the history of Springfield Township.

Established in 1985, the Society maintains a collection of photographs, documents and artifacts related to Springfield history; assists researchers interested in exploring our collection; documents the history of local individuals, families, businesses and institutions; promotes the preservation of buildings and sites of local significance; educates residents on Springfield history through speaker presentations, publications, and hosts tours of local historic buildings and sites.

To become a Friend, please consider a donation in any amount which will help further the work of the Springfield Township Historical Society.

☒ **YES, I/we would like to become a Friend of the Springfield Township Historical Society at the following level.**

☐ Benefactor..... \$1,000.00

☐ William Penn..... \$100.00

☐ Patron ..... \$500.00

☐ Penn's Manor ..... \$50.00

☐ Maria Springett Penn ..... \$250.00

☐ Penn Oak ..... \$25.00

☐ Please accept this check for \$\_\_\_\_\_. *Make checks payable to Springfield Township Historical Society. Mail to P.O. Box 564, Flourtown, PA 19031. Your canceled check will be proof of your donation.*

NAME \_\_\_\_\_

☐ I have enclosed a matching gift form.

ADDRESS \_\_\_\_\_

☐ I/we would like to volunteer to be on a Friends Committee or as a future Board Member.

ADDRESS \_\_\_\_\_

☐ I have included or would like to include the Historical Society in my estate plans.

PREFERRED EMAIL ADDRESS \_\_\_\_\_



To donate using a credit card, please visit [www.springfieldhistory.org/support](http://www.springfieldhistory.org/support) or scan this QR code to visit our website.

The official registration and financial information of the Springfield Township Historical Society may be obtained from the Pennsylvania Department of State by calling 800-732-0999. Registration does not imply endorsement.